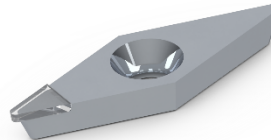
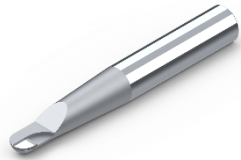




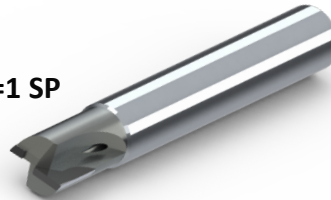
**DIXI 72420 PCD $\varnothing 3 \times 15 \times \varnothing 6 \times 55$
Z=2 SP**



DIXI 26420 DIA VCGT 110302 SP



DIXI 70320 DIA $\varnothing 6 \times 3 \times \varnothing 8 \times 60$ Z=1 SP



**DIXI 72420 PCD $\varnothing 14 \times 20$
 $\times \varnothing 14 \times 70$ Z= 2 SP**



**DIXI 17300 PCD M2.5x 0,45 x 5.8 x $\varnothing 3$
x 38 Z= 1 D1= $\varnothing 2$ SP**



**DIXI 72420 PCD $\varnothing 4 \times 8 \times \varnothing 6 \times 58$
Z=2 SP**

Application example: machining of vertebral implants

Purpose:

Machining a fast roughing part while maintaining an optimal tool life.

Tool :

DIXI 72420 PCD $\varnothing 10 \times 10 \times 20 \times \varnothing 12 \times 60$ Z= 2 SP
Roughing profile

Material :

PEEK

Machine :

5 axis CNC milling machine

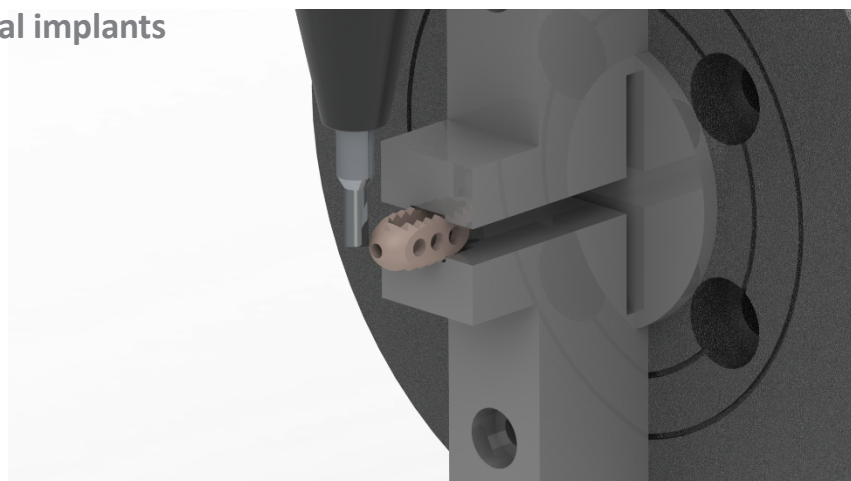
Cooling :

Nonw

Cutting conditions :

n= 15500 rpm

f= 1500mm/min



Result :

Very low wear of the milling cutter in this difficult to machine material thanks to the choice of a suitable PCD grade.

