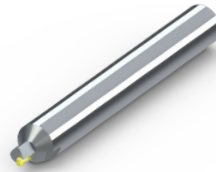
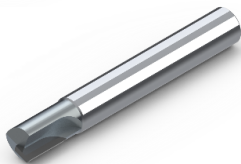


DIXI 72420 PCD
 $\varnothing 8 \times 16 \times \varnothing 8 \times 58 \text{ Z}=2 \text{ SP}$



DIXI 72310 PCD
 $\varnothing 0.5 \times 1 \times \varnothing 3 \times 30 \text{ Z}=1 \text{ SP}$



DIXI 72420 PCD
 $\varnothing 6 \times 6 \times \varnothing 8 \times 50 \text{ Z}=1 \text{ SP}$



DIXI 70170 PCD
 $\varnothing 0.2 \times 3 \times \varnothing 6 \times 50 \text{ Z}=1 \text{ SP}$



DIXI 16500 PCD
 $\varnothing 27 \times 6 \times \varnothing 6 \text{ Z}=7 \text{ R}=25$



DIXI 16500 PCD
 $\varnothing 27 \times 6 \times \varnothing 6 \text{ Z}=7 \text{ R}=10$

Application example: Trimming of a glasses frame

Purpose:

Reduce the number of tool changes, increase the tool life, without damaging the surface finish on the workpiece.

Tool :

DIXI 72420 $\varnothing 8 \times 7 \times 14 \times \varnothing 8 \times 63 \text{ Z}=2$

Material :

Acetate

Machine :

3-axis machining centre

Cooling :

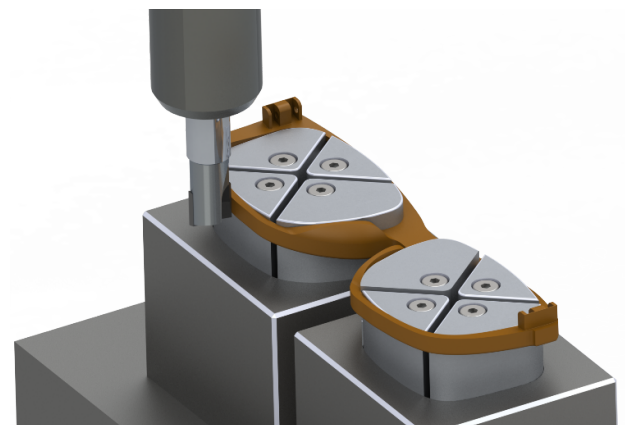
None

Cutting conditions :

N=16500 rpm

Vf=850mm/min

Ae=0.5mm



Result :

The number of parts has been multiplied by 5 compared to the previous carbide tool. The surface finish remains intact.

