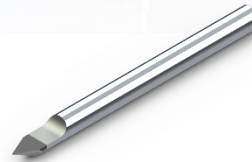
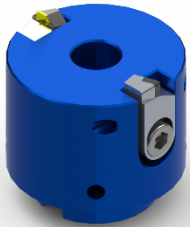




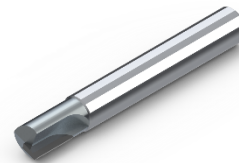
DIXI 70320 DIA
 $\emptyset 3 \times 3 \times \emptyset 6 \times 58 Z=1$



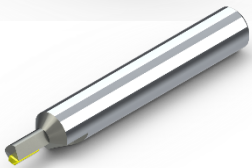
DIXI 70170 PCD
 $\emptyset 0.1 \times 3 \times \emptyset 6 \times 42 Z=1 /60^\circ$



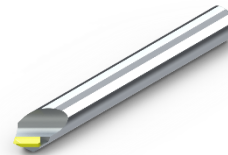
DIXI 81000 $\emptyset 60$
Posalux insert PCD blank
Posalux insert DIA finish



DIXI 70630 PCD
 $\emptyset 4 \times 10 \times \emptyset 6 \times 50 Z=1$



DIXI 70600 DIA
 $\emptyset 1 \times 2 \times \emptyset 6 \times 42 Z=1$



DIXI 70170 DIA
 $\emptyset 0.1 \times 3 \times \emptyset 6 \times 42 Z=1 /90^\circ$

Application example: surfacing of plates

Purpose:

To obtain a transparency on the room avoiding light reflections.

Tool :

DIXI 20370 DIA mounted on cleat $\emptyset 125$

Material :

PMMA

Machine :

Resurfacer

Cooling :

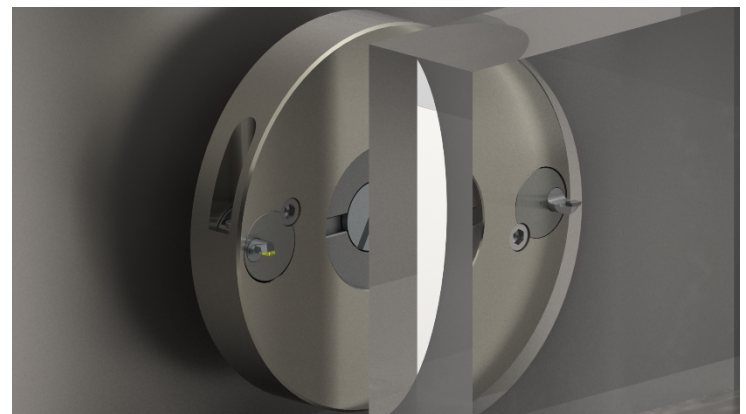
Air

Cutting conditions :

n= 4000 rpm

f= 200 mm/min

Ap=0.2mm



Result :

The diamond superfinishing tool allows us to obtain a neat surface finish with complete transparency.

