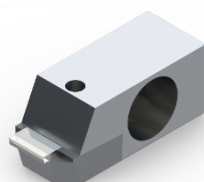


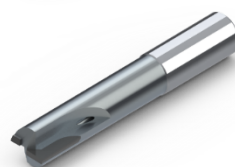
DIXI 20770 DIA
E=0.8 L=1.5 corps 8x8x80 Z=1 SP



DIXI 72310 DIA
DIXI 72310 DIA \varnothing 1 x 2.5 x \varnothing 3 x 30 Z= 1



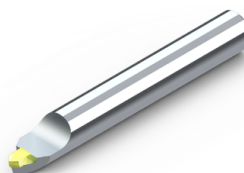
DIXI 20370 DIA E=6
Posalux 10x10x26



DIXI 72310 DIA
DIXI 72310 DIA \varnothing 1 x 2.5 x \varnothing 3 x 30 Z= 1



DIXI 70170
DIA D1= 0.1 - \varnothing 6 x 50 /60° Z=1



DIXI 15040 PCD
Stepped monobloc drill

DIXI 70170
DIA D1= 0.1 - \varnothing 6 x 50 /90° Z=1

Application example: Diamonding on watch plate

Purpose:

Chamfering of drill edges

Tool :

DIXI 70170 \varnothing 0,05 DIA

Material :

14 carat gold

Machine :

Machining center 3 axes

Cooling :

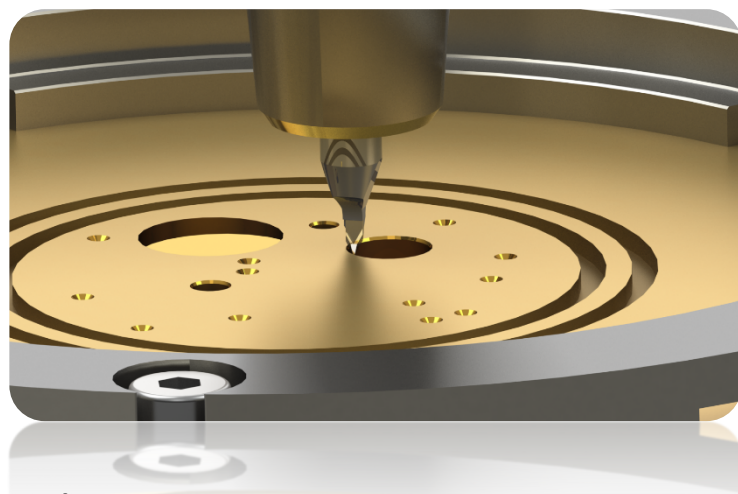
Oil

Cutting conditions :

n= 35000 rpm

vf= 65 mm/mm

ap= 0,05 mm



Result :

Mirror-polished finish on the chamfer, which gives an aesthetic effect that is not to be underestimated.

