

High-performance solid carbide reamers  
POLY 4001-TC – 4005-TC – 4007-TC – 4008-FC

In stock from  $\varnothing 0.40$  mm  
to  $\varnothing 12.03$  mm.

Available in increments of  
0.01 mm up to  $\varnothing 6.20$  mm.

Deliverable within 24 hours!

Special sizes available within 3–4 days.

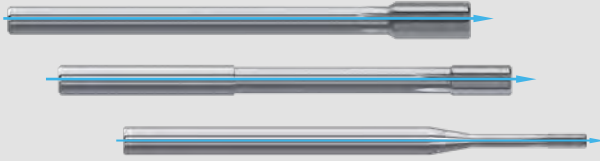
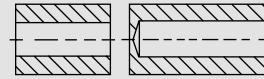
Contact us!



**DIXI POLYTOOL S.A.**  
Av. du Technicum 37  
CH - 2400 Le Locle  
T. +41 (0)32 933 54 44  
dixipoly@dixi.ch  
www.dixipolytool.com



## POLY 4001-TC

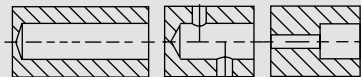


Cutting conditions  
POLY 4001-TC



- From Ø0.40 to Ø12.03 mm
- With irregular straight teeth, universal geometry
- Fully ground tool shank
- H7 tolerance, exceptional manufacturing precision of  $\pm 1.5 \mu\text{m}$
- In stock, uncoated
- Available within 24 hours in 0.01 mm increments from Ø0.40 to Ø6.20 mm
- Custom sizes in 48 hours
- For the machining of blind and through holes

## POLY 4005-TC



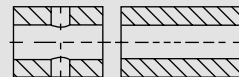
- From Ø2.97 to Ø6.50 mm
- Right hand helix, irregular teeth, universal geometry
- proper chip removal through the blind holes
- Shorter for a more compact design
- H7 tolerance, exceptional manufacturing precision of  $\pm 1.5 \mu\text{m}$
- In stock, uncoated
- Custom sizes in 48 hours
- For the machining of blind and through holes



Cutting conditions  
POLY 4005-TC



## POLY 4007-TC

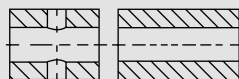


Cutting conditions  
POLY 4007-TC

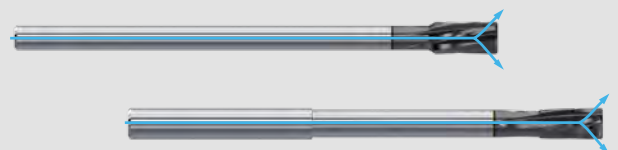


- From Ø0.4 to Ø12.03 mm
- Left hand helix, irregular teeth, universal geometry
- Forward chip removal
- Tolerance  $+0.003/0$
- In stock, uncoated
- Available within 24 hours in 0.01 mm increments from Ø0.40 to Ø6.20 mm
- Custom sizes in 48 hours
- For the machining of through holes only

## POLY 4008-FC



- From Ø2.50 to Ø12.03 mm
- Left hand helix, irregular teeth, for the machining of tough material
- radial lubrication from Ø2.50 mm
- H7 tolerance, exceptional manufacturing precision of  $\pm 1.5 \mu\text{m}$
- The extra smooth POLYCUT coating - in stock
- For the machining of through holes only



Cutting conditions  
POLY 4008-FC

