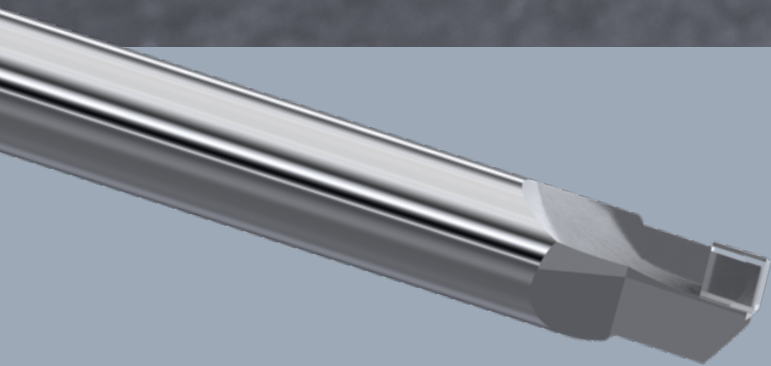


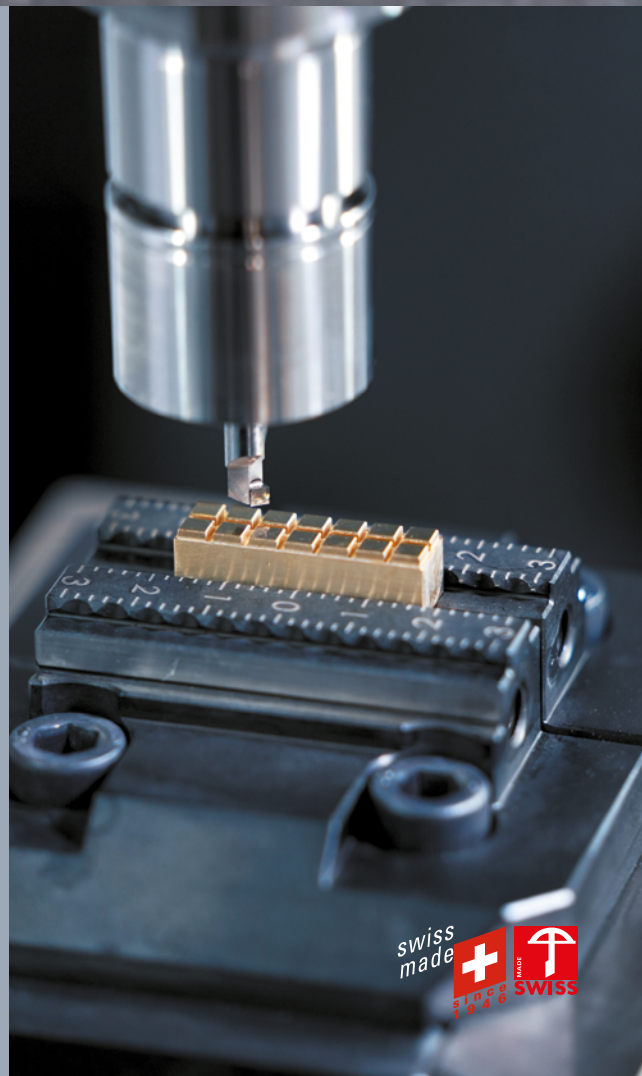
Nieuwe monokristallijne
diamant frees
DIXI 70610

Nu op
voorraad
verkrijbaar
van $\varnothing 4$ mm
tot $\varnothing 10$ mm



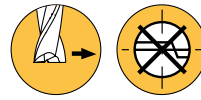
**Spiegelfrezen van
oppervlaktes.**

Speciale geometrie voor vlakfrezen.

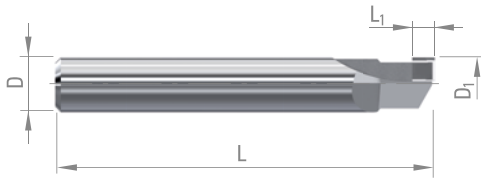


DIXI 70610 DIA

Z = 1



MONOKRISTALLIJNE DIAMANT VLAKFREZEN



- Monokristallijne diamant vlakfrezen ontwikkeld voor spieglfrezen van non-ferro materialen en edelmetalen.
- DIA wordt gebruikt voor spiegelgladde afwerking.

○ good ⊙ excellent

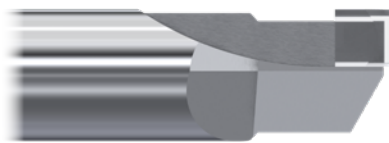
| ISO | P | | | | | | | | | | | | M | | | | K | | | | | | |
|-----------------------|-----------------|---|---|---|---|-------------------|---|---|---|--------------------|-----------------------------|---|----|------|------|----------------|-------------------|---------------------|----|----|----|----|----|
| Materials description | Unalloyed steel | | | | | Low alloyed steel | | | | High alloyed steel | Martensitic stainless steel | Austenitic stainless steel (DUPLEX/ PH) | | | | Grey cast iron | Nodular cast iron | Malleable cast iron | | | | | |
| VDI 3323 | 1 | 2 | 3 | 4 | 5 | 6 | 7 | 8 | 9 | 10 | 11 | 12 | 13 | 14.1 | 14.2 | 14.3 | 14.4 | 15 | 16 | 17 | 18 | 19 | 20 |
| Recommendations | | | | | | | | | | | | | | | | | | | | | | | |

| ISO | N | | | | | | | | | | S | | | | | | H | | | | | | |
|-----------------------|-------------------------|----|----------------------|----|----|---------------|--------------------|--------------|----------|---------|------|-----------------------|----|----|--------------------------|----|----|----------------|----------------|----|----|--|--|
| Materials description | Wrought aluminium alloy | | Cast aluminium alloy | | | Cu + Pb alloy | Cu alloy difficult | Gold, Silver | Graphite | Plastic | Wood | Special alloy Ni / Co | | | Titanium, titanium alloy | | | Hardened steel | Hard cast iron | | | | |
| VDI 3323 | 21 | 22 | 23 | 24 | 25 | 26 | 27 | 28 | - | - | 29 | 30 | 31 | 32 | 33-35 | 36 | 37 | 38 | 39 | 40 | 41 | | |
| Recommendations | ○ | ○ | ○ | ○ | ○ | ⊙ | ⊙ | ⊙ | ⊙ | | ○ | | | | | | | | | | | | |

| $D_{1 \pm 0.05}$ | L_1 | D_{h6} | L | DIA |
|------------------|-------|----------|----|--------|
| 4 | 2.5 | 6 | 40 | 443286 |
| 6 | 2.5 | 6 | 40 | 443287 |
| 8 | 2.5 | 8 | 63 | 443288 |
| 10 | 2.5 | 10 | 67 | 443289 |

APPLICATIE VOORBEELD

Oppervlaktebewerking van een messing onderdeel



Gereedschap: DIXI 70610 DIA Ø6

Materiaal : loodvrij messing

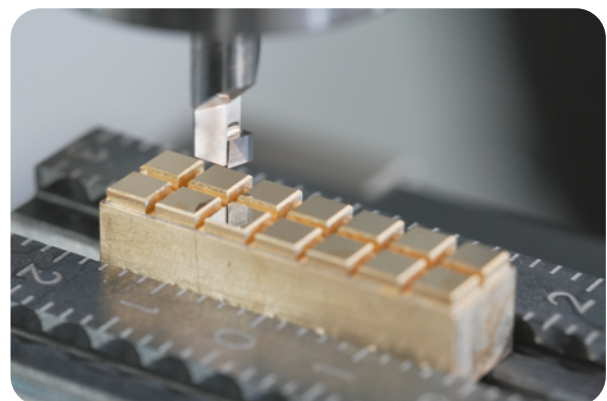
N = 30'000 rpm

Vf = 150 mm/min

Ap = 0.05mm

Conclusie:

Het assortiment frezen is ontwikkeld voor spieglfrezen van non-ferro materialen. Bovendien maken de extreem scherpe snijkanten een oppervlakteruwheid van minder dan Rz 0,02µm mogelijk.



DIXI POLYTOOL B.V.

Pakhuisstraat 11

NL- 7553 GX Hengelo

T. +31 (0)74-303 55 00

dixiholand@dixi.com

www.dixipolytool.com